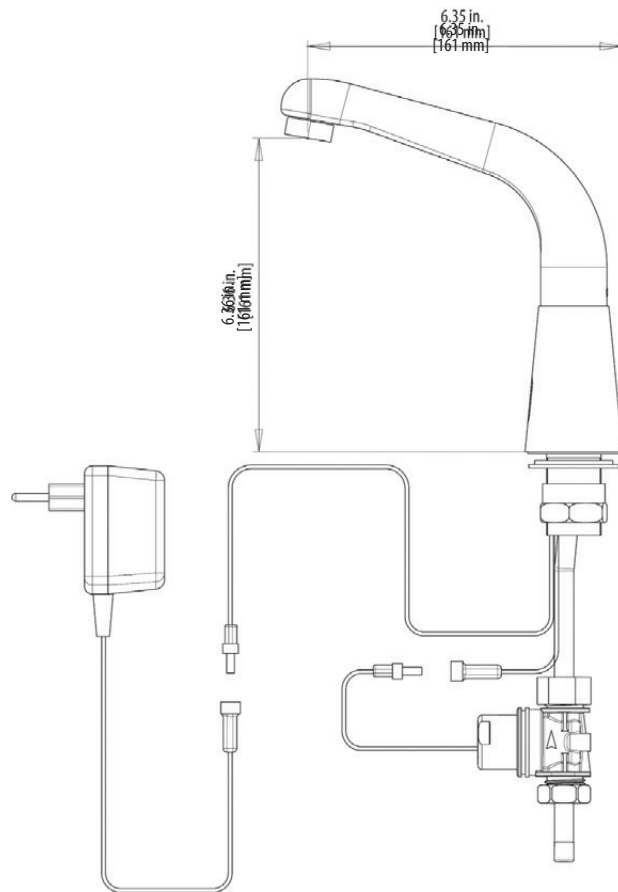
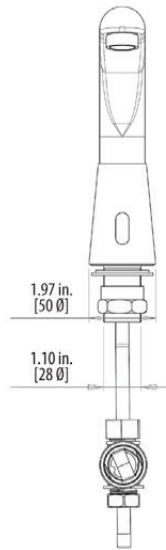




Use your smart phone to scan the above QR code to visit our website: www.bk-resources.com

Jet Faucet

Model: BKF-JET-G, Lead Free



Product Specifications:

- Single Hole Polished Chrome Plated Touch-Free Faucet for Cold or Premixed Water
- Lead Free Product
- 0.5 GPM (1.9 L/min) Vandal Resistant Aerator
- Preset Sensor Range: 8 21/22" Adjustable
- Minimum Sensor Range: 3 5/32
- Maximum Sensor Range: 11 13/16"
- Available with a 9V Battery or a 9V Transformer
- Operating Pressure: 7-100 PSI
- Max Operating Temperature: 158° F
- Security Time: The Faucet will Shut Down Automatically After 90 Seconds
- Adjustable Sensor Settings by Remote Control

Maintenance:

DO NOT use steel wool or cleansing agents containing alcohol, acid, abrasives or the like. Use of any prohibited cleaning or maintenance products or substances could damage surface of the faucet. For surface cleaning of faucet use ONLY soap and water, then wipe dry with clean cloth or towel. When cleaning bathroom tile, the faucets should be protected from any splattering of harsh cleansers.

Certifications:



ADA Compliant



PRODUCT SPECIFICATION SHEET

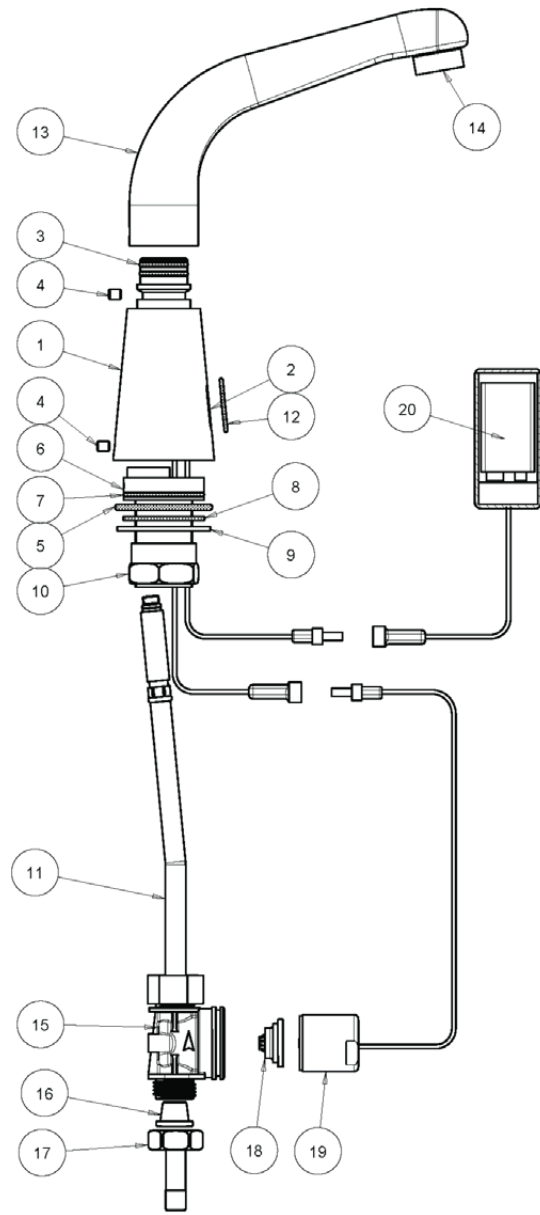
RESOURCES





Jet Faucet

Model: BKF-JET-G, Lead Free



Exploded Parts Detail:

| Diagram # | Quantity | Part Number | Description |
|-----------|----------|-------------|------------------|
| 1 | 1 | BKF-JET-G | Faucet Body |
| 2 | 1 | JET-IRS | Infra Red Sensor |
| 3 | 1 | JET-SO | Spout O-Ring |
| 4 | 1 | JET-SS | Set Screw |
| 5 | 1 | JET-B0 | Base O-Ring |
| 6 | 1 | JET-INSERT | Insert |
| 7 | 1 | JET-B02 | Base O-Ring |
| 8 | 1 | JET-BG | Base Gasket |
| 9 | 1 | JET-DISK | Base Disk |
| 10 | 1 | JET-MN | Mounting Nut |
| 11 | 1 | JET-WL | Water Line |
| 12 | 1 | JET-SEN-O | Sensor O-Ring |
| 13 | 1 | JET-SPT | Spout |

| Diagram # | Quantity | Part Number | Description |
|-----------|----------|-------------|----------------|
| 14 | 1 | JET-AER | Aerator |
| 15 | 1 | JET-SB | Solenoid Body |
| 16 | 1 | JET-FILTER | Filter |
| 17 | 1 | JET-N | Nipple |
| 18 | 1 | JET-D | Diaphragm |
| 19 | 1 | JET-SV | Solenoid Valve |
| 20 | 1 | JET-9V | Battery Box |

PRODUCT SPECIFICATION SHEET

RESOURCES

