



Instruction & Operation Manual

Glass Door Merchandisers

FREEZER:

BKGF18 BKGF18B
BKGF23 BKGF23B
BKGF49 BKGF49B

REFRIGERATOR:

BKGM12 BKGM12B
BKGM14 BKGM14B
BKGM18 BKGM18B
BKGM23 BKGM23B
BKGM48SL BKGM48SLB
BKGM49 BKGM49B
BKGM72 BKGM72B



Please read the user's manual before you use this product.



Content:

1.Preface.....	2
2.Use of the equipment.....	3
3.Technical features.....	3
4.Operation.....	3
5.Control unit.....	4
6.Handling.....	4
7.Installation procedure.....	5
8.Connecting to the main power supply.....	5
9.Maintenance instructions.....	6
Cleaning.....	6
Cleaning the refrigerator surface.....	6
Cleaning the inside of the refrigerator.....	7
Cleaning the condenser.....	7
10.Troubleshooting.....	7
11.Technical service.....	7
12.Configuration Sketch Map.....	8
Operating Instruction.....	8
Electrical Control Circuit Diagram.....	11
Technical Parameters.....	13
Official Approval And Rules.....	14

Service Contact

Blue Air Refrigeration has a Nationwide Service Network to provide timely services to our customer' s needs.

Please call or fax us at the following numbers.

Blue Air Refrigeration Nationwide Service Network

Toll Free, 1-866-677-8500

TEL, (310) 808-0102

Fax, (310) 808-0242/0262



1. Preface

This instruction manual provides all the necessary information regarding:

- ▲ use of the refrigerator
- ▲ technical specifications
- ▲ installation and handling
- ▲ operating procedures and instructions
- ▲ maintenance operation

The manual is to be considered an integral part of the refrigerator and should be stored in a safe place for further consultation to ensure proper operation of the refrigerator.



ATTENTION

The manufacturer cannot be held liable in the following cases:

- improper installation (not in accordance with the guidelines indicated herein)
- misuse of the refrigerator
- power supply defects
- improper or inadequate maintenance
- unauthorized modification or tampering
- use of non-original spare parts
- partial or total failure to comply with the instructions

All electrical equipment can be hazardous to health. Current standards and legal requirements must be complied with during the installation and use of any equipment.



2. Use of the equipment

The refrigerator is designed to preserve fresh perishable foodstuffs.

The operating temperature for refrigeration is:

- between 45°F and 33°F .

The operating temperature for frozen food maintenance is:

- between -1°F and -8°F.

3. Technical features

The refrigerator is a ventilated system, the evaporator is in a separate insulated box . All the materials used in the manufacture of this unit are guaranteed to be suitable for use with foodstuffs. The gases used is R-134a for refrigerator units and is R-404a for Freezer units.

The refrigerating circuit are in compliance with all relevant rules and regulations..

4. Operation

The gas in the refrigerating circuit is compressed, liquefied and then evaporated in the ventilated evaporator.

This cycle involves the absorption of heat from the air in the refrigerator compartment . The heat produced is then dissipated to the outside environment by a condenser unit .



5. Control unit

The refrigerator is controlled by a “digital control unit” and a “main switch pilot light” in the top panel of the refrigerator.

The “main switch pilot light” is for turning on the power supply.

The green pilot light comes on to indicate that the unit is connected to an electrical outlet and is in operation.

The green pilot light comes off to indicate that the unit is disconnected and is not operation. The “digital control unit” regulates all parameters to provide the correct working environment of the refrigerator. Please consult all parameters in the attachment manual of the “digital control unit”.

This manual is part of the instruction manual and is very important for future services.

6. Handling

The refrigerator arrives in PET film and packed in a cardboard box on a wood pallet.



The refrigerator must be transported and handled with care to avoid posing a hazard to persons or property.

Never place a refrigerator with an in-built refrigerated unit on its side or turn it upside

down as this may damage or impair operation of the refrigerated unit.

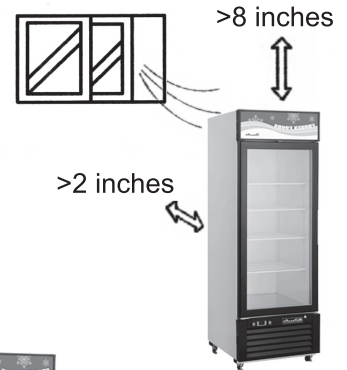
We cannot be held liable for any damage or defects arising directly or indirectly from improper handling of the equipment or non-compliance with the safeguards illustrated above.





7. Installation procedure

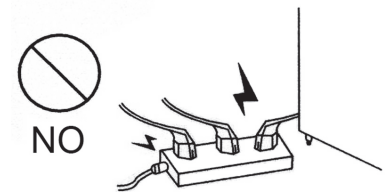
- ▲ Place the refrigerator in the coolest and best ventilated part of the room. **Do not** install the refrigerator near direct heat or in sunlight sources.
- ▲ Remove the straps securing the cardboard packing
Remove the cardboard.
Remove the PET protection film
- ▲ Clean the refrigerator with mild detergent and then dry it with a soft cloth.



8. Connecting to the main power supply

- ⚠ This operation must be carried out by professionally and qualified persons.

The refrigerator is supplied with a power supply cable for connection to the main power supply. A thermomagnetic circuit breaker (not supplied) must be installed between the mains power point and the power supply cable of the refrigerator.



Before proceeding make sure that:

- ▲ the provided voltage corresponds to the voltage on the refrigerator 115V/60Hz/1Ph; to ensure proper operation it is essential for the power supply voltage to come within a range of +/- 10% of the unit's rated voltage





- ▲ ensure the electrical system to which the refrigerator will be installed is rated for the electric output of the unit .
- ▲ ensure the electrical system to which the refrigerator is connected is in compliance with current standard regulations .
- ▲ ensure the electric connections and the installation of the thermomagnetic circuit breaker have been done by qualified person.

Connecting steps:

- ▲ Install a thermomagnetic circuit breaker suited to the rated output of the unit being installed
- ▲ Connect the refrigerator unit to the thermomagnetic circuit breaker outlet
- ▲ Check that the refrigerator is in operation by checking the light incorporated in the main switch coming on

9. Maintenance instructions

The smooth operation and life of the equipment is determined by correct and regular maintenance

Cleaning:

Regular monthly cleaning of the refrigerator unit is strongly recommended . Please follow the instructions below.

- ⚠ Disconnect the refrigerator power supply cable from the outlet prior to carrying out any type of cleaning operation.

Cleaning the refrigerator surface:

Clean the refrigerator with mild detergent and then dry it with a soft cloth.
Do not use abrasive detergents!



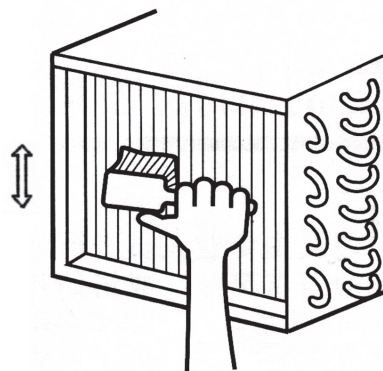


Cleaning the inside of the refrigerator:

Clean the inside of the unit monthly with a non toxic mild detergent .

Cleaning the condenser:

For efficient operation of the refrigerator it is advisable to clean the condenser . every 4 months with a dry brush or vacuum cleaner.



10. Troubleshooting

Refrigerator stops working (light off):

- ☆ Power supply failure .
- ▲ Remedies:
 - ☆ Check that the plug is inserted properly in the socket .
 - ☆ Check that the switch is in the on position .
 - ☆ Check the electrical supply to the unit .

Refrigerator temperature is high :

- ☆ Unit is too close to a direct heat source .
- ☆ Dirty Condenser .
- ▲ Remedies:
 - ☆ Move the unit away from heat source .
 - ☆ Clean the condenser .

11. Technical service

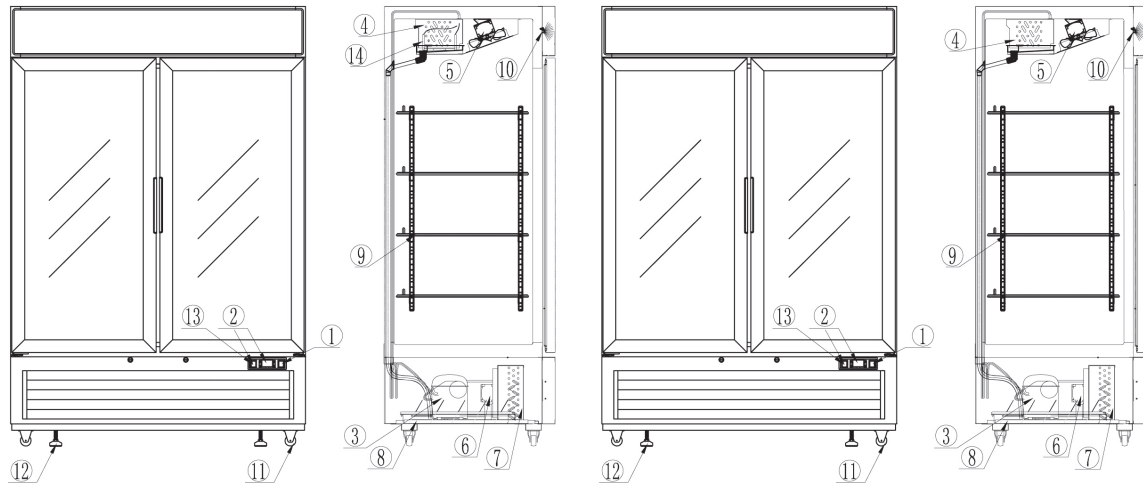
For technical service please contact the dealer' s service department and provide the serial number and date of purchase of the unit .



12. Configuration Sketch Map

Glass Door Freezer

Glass Door Refrigerator



- | | | |
|---------------------|-----------------------------|------------------------|
| 1. Power switch | 2. Microcomputer controller | 3. Compressor |
| 4. Evaporator | 5. Evaporator fan motor | 6. Condenser fan motor |
| 7. Condenser | 8. Drain case | 9. Shelf |
| 10. LED Lamp | 11. CASTER | 12. Level foot |
| 13. LED Lamp switch | 14. Defrost system | |

Operating Instruction

- Before using the refrigerator, it should be opened and ventilated. After ventilation, users should use warm water clean the unit' s interior.
- After connecting the power supply, press the "POWER" switch on the control panel (Green Indicator Light ON), the fridge will begin operating. The microcomputer controller, installed in the control panel, will automatically adjust the temperature ranges. This intelligent digital controller works as follows: if the temperature increases pass the set point plus a differential value the compressor is started and when the temperature reaches the set point value the compressor turns off.





3. Microcomputer Controller Operation Instruction:

4. Microcomputer panel displays the operational status of the unit.

5. **SET** To display target set point, in programming mode it selects a parameter or confirm an operation.



(Mod. XR06CX)

❄ To start a manual defrost.

▲ In programming mode it browses the parameter codes or increases the displayed value .

▼_{AUX} In programming mode it browses the parameter codes or decreases the displayed value .

▼+▲ To lock or unlock the keyboard

SET+▼ To enter in programming mode

SET+▲ To return to room temperature display .

6. How to read the Set point(temperature).

Push and immediately release the SET key, the set temperature will be showed; Push and immediately release the SET key or wait about 5s to return to normal display mode.

7. How to change the Set point value(temperature)

Push the SET key for more than 2 seconds to change the Set point value; The value of the set point will be displayed and the “°C” or “°F” LED starts blinking;

To change the Set point value, push the ▲ or ▼_{AUX} arrows.

To program the new set point value push the SET key again or wait 10s.

8. How to start a manual defrost .

Push the DEF ❄ key for more than 2 seconds and a manual defrost will start .

LED	MODE	SIGNIFICATO
❄	On	Compressor enabled
	Flashing	Anti short cycle delay enabled (AC parameter)
❄	On	Defrost in progress
	Flashing	Dripping in progress
🌀	On	Fans output enabled
	Flashing	Fans delay after defrost
°C	On	Measurement unit
	Flashing	Programming mode
°F	On	Measurement unit
	Flashing	Programming mode



9. How to change a parameter value

To change the parameter's value:

Enter the Programming mode by pressing the **SET+▽** keys for 3s
 (“°C” or “°F” LED starts blinking).

Select the required parameter. Press the “SET” key to display its value

Use **△** or **▽_{AUX}** to change its value.

Press “SET” to store the new value and move to the following parameter.

To exit: Press **SET+△** or wait 15s without pressing a key.

NOTE: the set value is stored even when the programming procedure is terminated by automatic time out.

10. To lock the keyboard.

Keep pressed for more than 3s the **▽+△** keys.

The “OF” message will be displayed and the keyboard will be locked.

If a key is pressed more than 3s the “OF” message will be displayed.

11. To unlock the keyboard.

Keep pressed together for more than 3s the **▽+△** keys till the “on” message will be displayed.

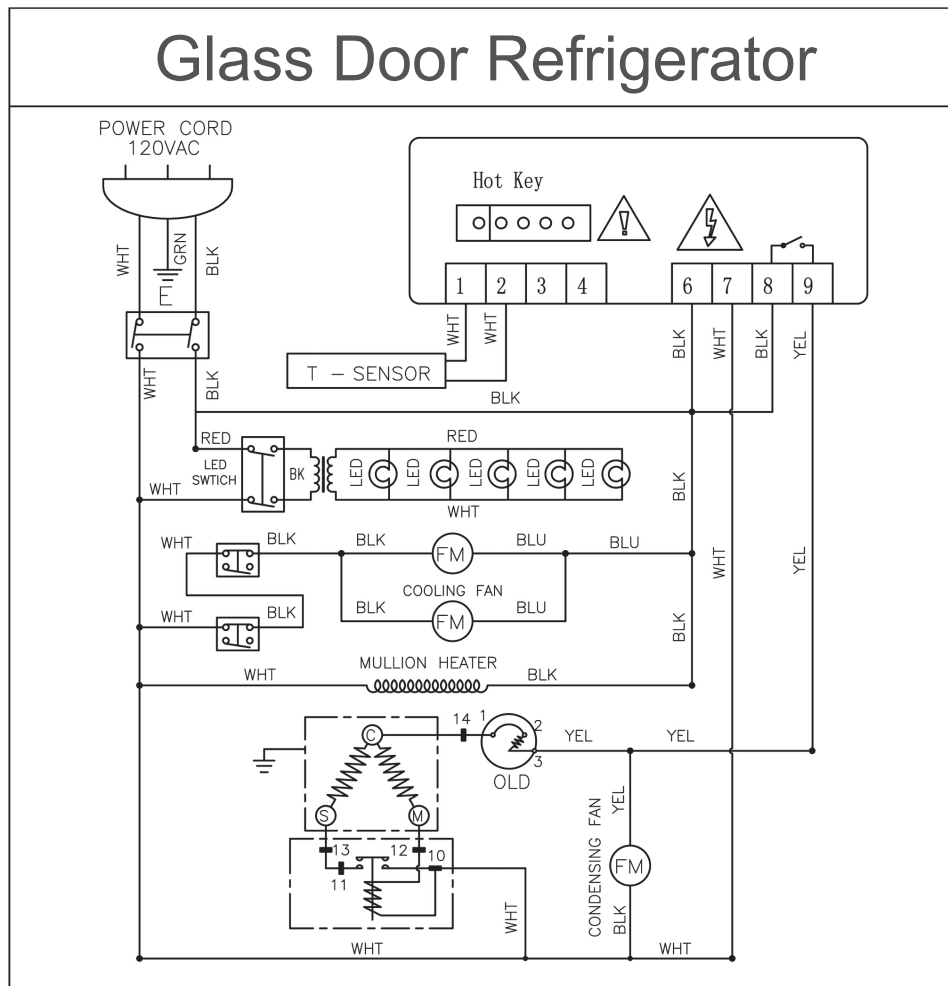
12. Alarm Signaling.

Mess.	Cause	Outputs
"P1"	Room probe failure	Compressor output according to “Cy” e “Cn”
"P2"	Evaporator probe failure	Defrost end is timed
"HA"	Maximum temperature alarm	Outputs unchanged
"LA"	Minimum temperature alarm	Outputs unchanged
"EA"	External alarm	Outputs unchanged
"CA"	Serious external alarm	All outputs OFF
"dA"	Door Open	Compressor and fans restarts



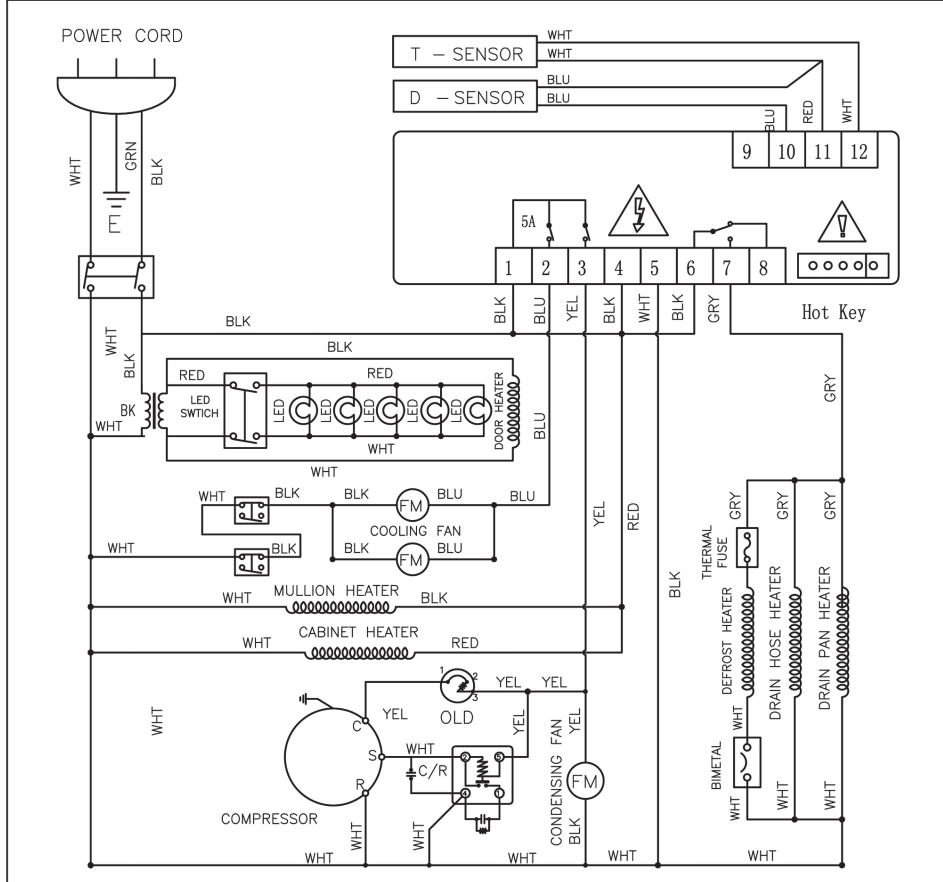
Our products have been modified precisely before leaving factory, in order to avoid damaging the compressor or unit , users should not , modify the microcomputer parameters on their own.

Electrical Control Circuit Diagram





Glass Door Freezer





Technical Parameters

Product Description	Model	Prevention class of getting an electric shock	Power source (V) Rating frequency(Hz)	Rated power (W)	Temperature range (° F)	Refrigerant	Dimension (in)	Net Weight (lb)
Single Glass Door Refrigerator-White	BKGM12	I	115/60	280	33~45	R134a	24.2×24×61.5	183
Single Glass Door Refrigerator-Black	BKGM12B	I	115/60	280	33~45	R134a	24.2×24×61.5	183
Single Glass Door Refrigerator-White	BKGM14	I	115/60	280	33~45	R134a	24.2×24×76.2	208
Single Glass Door Refrigerator-Black	BKGM14B	I	115/60	280	33~45	R134a	24.2×24×76.2	208
Single Glass Door Refrigerator-White	BKGM23	I	115/60	280	33~45	R134a	27×31.5×81	254
Single Glass Door Refrigerator-Black	BKGM23B	I	115/60	280	33~45	R134a	27×31.5×81	254
Two Glass Sliding Door Refrigerator-White	BKGM48SL	I	115/60	400	33~45	R134a	54.4×29.7×84	395
Two Glass Sliding Door Refrigerator-Black	BKGM48SLB	I	115/60	400	33~45	R134a	54.4×29.7×84	395
Two Glass Door Refrigerator-White	BKGM49	I	115/60	400	33~45	R134a	54.4×31.5×81	408
Two Glass Door Refrigerator-Black	BKGM49B	I	115/60	400	33~45	R134a	54.4×31.5×81	408
Three Glass Door Refrigerator-White	BKGM72	I	115/60	650	33~45	R134a	81.8×31.5×81	559
Three Glass Door Refrigerator-Black	BKGM72B	I	115/60	650	33~45	R134a	81.8×31.5×81	559
Single Glass Door Freezer-White	BKGF23	I	115/60	650	1~-4	R404A	27×31.5×81	288
Single Glass Door Freezer-Black	BKGF23B	I	115/60	650	1~-4	R404A	27×31.5×81	288
Two Glass Door Freezer-White	BKGF49	I	115/60	1170	1~-4	R404A	54.4×31.5×81	456
Two Glass Door Freezer-Black	BKGF49B	I	115/60	1170	1~-4	R404A	54.4×31.5×81	456

NOTES :

The technical data can be changed without further notice.



OFFICIAL APPROVAL AND RULES

CONFORMS TO NSF / ANSI STD.7

CONFORMS TO UL STD.471

CERTIFIED TO CSA STD.C22.2 NO.120



Intertek
4003935



Intertek
4003935

Cut along dotted line and mail it back to : BLUE AIR Customer Service Dept. 223 W. Rosecrans Ave. Gardena, CA 90248



Warranty Registration Card

Blue Air Commercial Refrigeration Inc.
223 W. Rosecrans Ave. Gardena, CA 90248
Tel. 310-808-0102, Fax. 310-808-0242

Customer Name _____

Business Name _____

Telephone : () _____

Telephone : () _____

Address (Customer)

Address (Business or Installation Site)

Street _____

Street _____

City _____ State _____ Zip _____

City _____ State _____ Zip _____

Place of Purchase _____

Date Purchased _____ Date Installed _____

Model Name _____

Product Serial No. _____

Extended Warranty Option

Additional 1 Year Parts & Labor extended Warranty available
If you are interested, please contact Blue Air Customer Service Dept.

Yes, I would like the extended warranty. / No, I would not like the extended warranty.

Signature of Business Owner _____

Date _____

※ The Warranty becomes void if the attached warranty card is not filled out and returned to Blue Air within 15 days from the purchase date.

BLUE AIR

223 W. Rosecrans Ave., Gardena, CA 90248

TEL, (310) 808-0102

Fax, (310) 808-0242/0262

Toll Free, 1-866-677-8500

Visit us our website at www.blueairinc.com

W0811114.20141025

