



RESOURCES

Cabinet Base Work Tables

Stainless Steel Cabinet Base Tables With 5" Riser With Hinged Doors / Locks



Use your smart phone to scan the above QR code to visit our website:
www.bk-resources.com

Certifications:



Features:

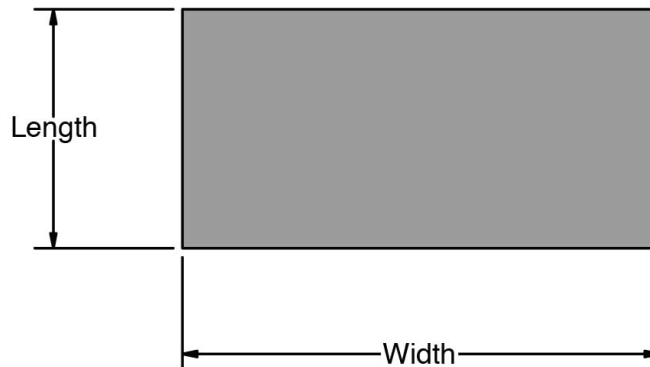
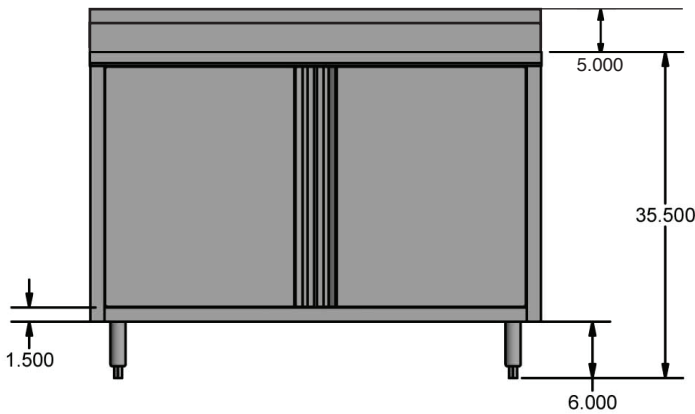
- 1 5/8" x 6" Straight S/S Leg
- Legs Adjust 1" in Height
- Truck Line Only

Material:

- T-304 14 ga. Stainless Steel Top
- T-304 18 ga. Stainless Steel Body
- Stainless Steel Legs & Feet



Length	24" Width with Hinged Doors	30" Width with Hinged Doors
36"	BKDCR5-2436H	BKDCR5-3036H
48"	BKDCR5-2448H	BKDCR5-3048H
60"	BKDCR5-2460H	BKDCR5-3060H
72"	BKDCR5-2472H	BKDCR5-3072H
Length	24" Width with Hinged Doors & Lock	30" Width with Hinged Doors & Lock
36"	BKDCR5-2436HL	BKDCR5-3036HL
48"	BKDCR5-2448HL	BKDCR5-3048HL
60"	BKDCR5-2460HL	BKDCR5-3060HL
72"	BKDCR5-2472HL	BKDCR5-3072HL



PRODUCT DATA SHEET

RESOURCES

