



Cabinet Base Work Tables

*Stainless Steel Cabinet Base Tables
With Sliding Doors*

Certifications:



Features:

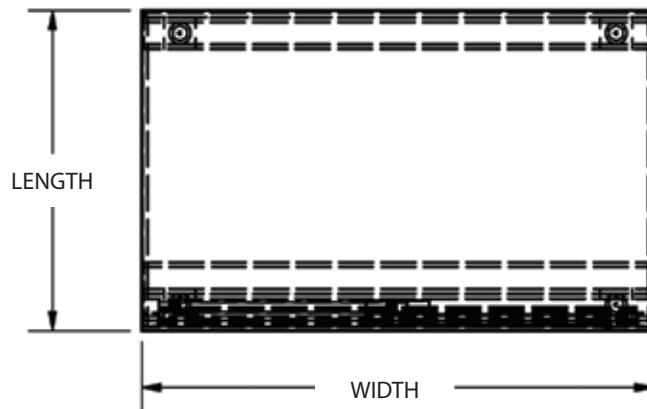
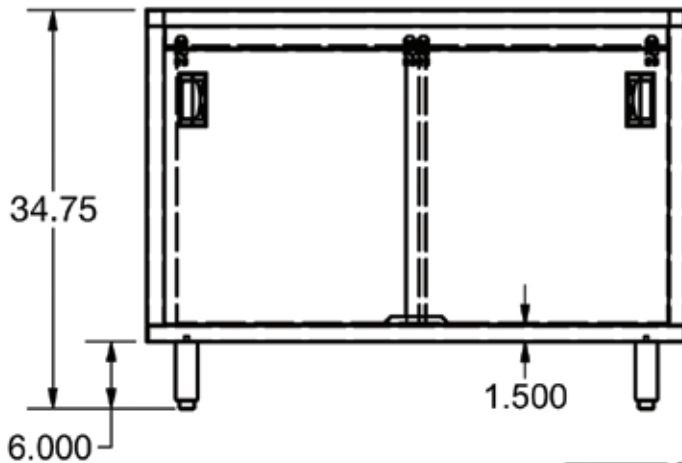
- 1 5/8" x 6" Straight S/S Leg
- Legs Adjust 1" in Height
- Truck Line Only
- Casters Available

Material:

- T-304 14 ga. Stainless Steel Top
- T-304 18 ga. Stainless Steel Body
- Stainless Steel Legs & Feet

Length	24" Width with Sliding Doors
36"	BKDC-2436S
48"	BKDC-2448S
60"	BKDC-2460S
72"	BKDC-2472S
96"	-

30" Width with Sliding Doors
BKDC-3036S
BKDC-3048S
BKDC-3060S
BKDC-3072S
BKDC-3096S



PRODUCT DATA SHEET

BK RESOURCES

