



Filler Tables

All Stainless Steel Filler Tables



Use your smart phone to scan the above QR code to visit our website:
www.bk-resources.com

Certifications:



Features:

- 1 5/8" Legs
- 1 1/2" Riser
- Stainless Top, Legs & Shelf

Options:

- Casters
- Upgraded Bullet Feet
- Extra Shelves

Material:

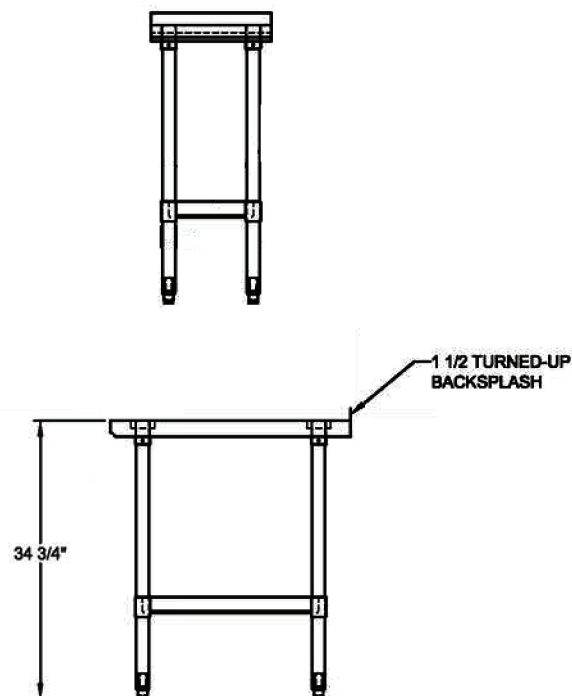
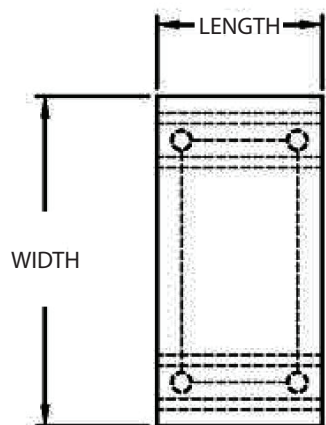
S/S w/ Stainless Steel Legs & Undershelf

- T-430 18 ga. Stainless Steel Top
- Stainless Steel Legs & Adjustable Undershelf
- Adjustable High Impact Corrosion Resistant Feet



T-430 S/S 24" Width	
Length	
15"	SFTS-1524
18"	SFTS-1824
24"	-

T-430 S/S 30" Width	
	SFTS-1530
	SFTS-1830
	SFTS-2430



PRODUCT DATA SHEET

BK RESOURCES

